

206-Series 'Bolt-On' Winged Wall-Safe Lock Options

Product Overview

The **206-Series Winged Wall-Safe Lock** was introduced in conjunction with the 100-Series Safe Lock. Again, this lock was based on the new 100-Series lever and was targeted to suit the wall-safe type application and designed to be very resistant to a forced entry assault. Again, with its winged 'bolt-on' design, these locks were primarily installed on fire-proof safe doors and sub-treasury wall-safe units. Today, this lock is also based on the 102-Lever design.

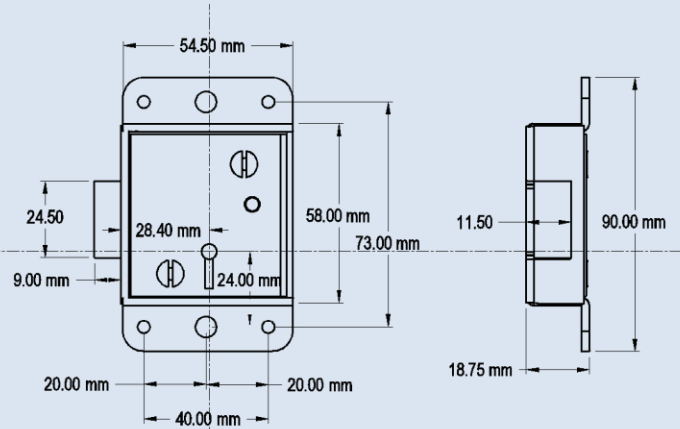


206-WL/R30 Safe Lock

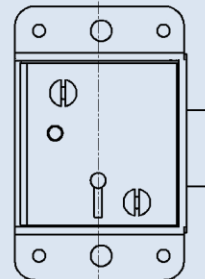
- The 206-Series Safe Lock range uses the 102-Lever design. A 102-Series Key & Lever Kit includes a brass key gauge and laminated lever chart.



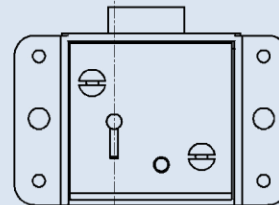
'Bolt-On' Handing Options



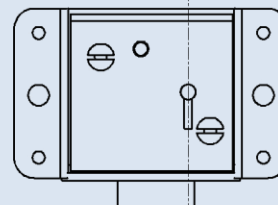
206-WL/R30



206-WR/R30



206-WU/R40



206-WD/R40