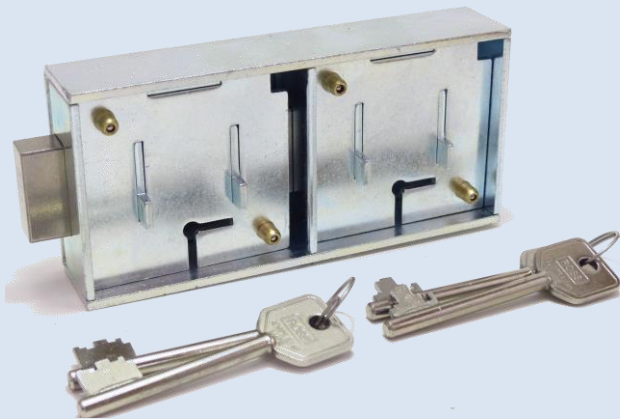


Specialised: 'Dual Control' Safe Lock Options

Product Overview (Safe Deposit)

Specialised : Application option

The **600-Series Safe Deposit Lock** consists of a double weld-on cover holding (2) of our 600-Series locks. The front lock is classified as the *Custodian* lock and the back lock as the *Renter* lock. Operationally, both key holders will need to be at the unit together to open the door. The *Renter* will open the back lock first, retaining his key in the lock. The *Custodian* will then be allowed to open the front lock and removes his key from the lock. The door to the unit can now be opened. The *Custodian* then leaves the room allowing the *Renter* to access the contents of the safe deposit drawer. When the *Renter* is finished, the safe deposit drawer and the door are then both closed, the door re-locked and the key then removed from the lock. The *Renter* action to re-lock the back lock also re-locks the front lock on this unit.



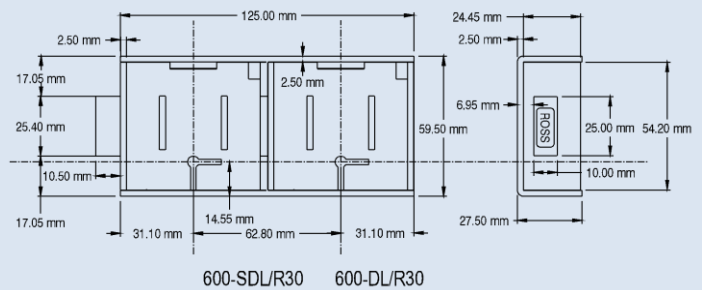
600-SDL/R30 Safe Lock

Product Overview (Dual Control)

Specialized : Application option

The **600-Series Dual Control Safe Lock** looks the same as the (Safe Deposit) lock but in this case the locks operate independently. Operationally, the back lock needs to be opened first to allow the front lock to be opened. Once this is completed, the *Renter* then has the control the un-lock and re-lock the door until such time as the *Custodian* decides to re-lock the front lock.

(Safe Deposit) Option

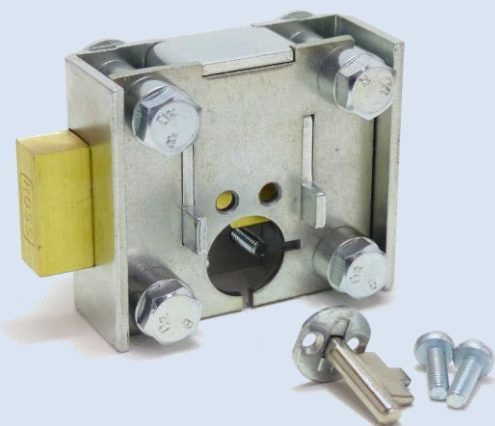


DIMENSIONAL DRAWING

Product Overview (Bi-Lock Cylinder)

Specialised : Application option

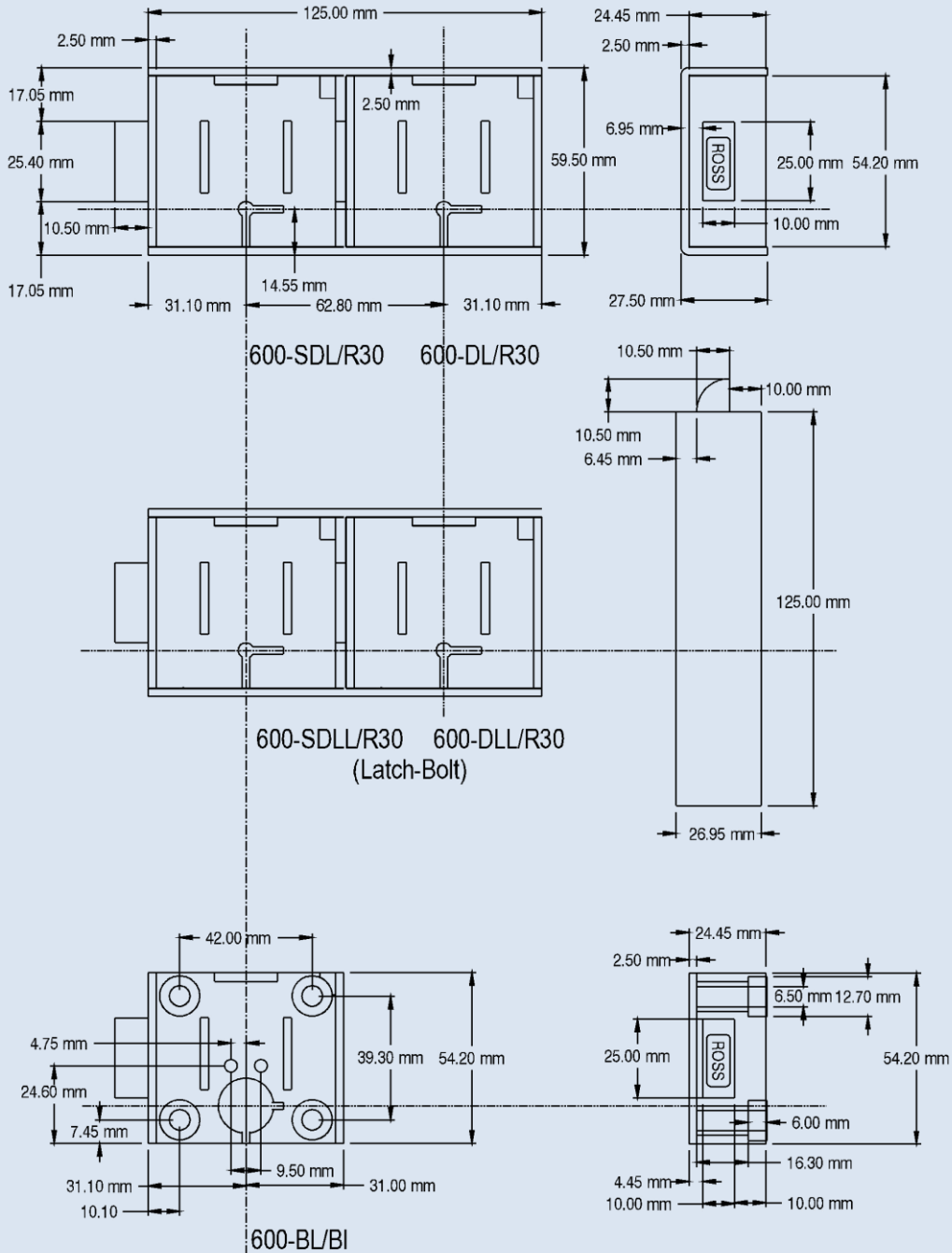
The **600-Series Safe Lock** (Bolt-On / Bi-Lock) version provides for the adaption of a Bi-Lock oval cylinder with the (Bolt-On) footprint of the 600-Series Safe Lock. This lock comes complete with a cam assembly. The cylinder and cam screws are not provided.



600-BL/BI Safe Lock

Specialised: 'Dual Control' Handing Options

**Specialised
Keyhole Options**



600-SD_ identifies this 'Safe Deposit' lock version comes complete with a double 'WELD-ON' cover.

600-SDL_ identifies the 'Safe Deposit Latch' lock version comes complete with a double 'WELD-ON' cover.

600-SDL identifies this 'Safe Deposit' lock handing as being LH/UP bolt-throw and comes complete with a double 'WELD-ON' cover.

600-SDLL identifies this 'Safe Deposit Latch' lock handing as being LH/UP bolt-throw and comes complete with a double 'WELD-ON' cover.

PRODUCT CODING STRUCTURE